

Application

With their performance graduations, the compli 1200 lifting stations has been designed for larger storage capacities, if wastewater of several residential units or wastewater from commercial enterprises, for example, have to be disposed of. During the design work, special attention was given to easy handling, space-saving erection and uncomplicated installation.

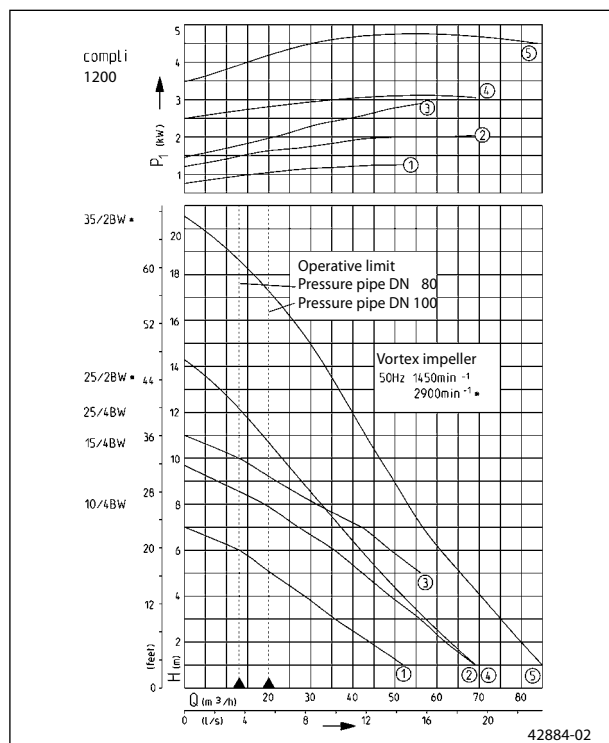
A fitting (to be provided by the customer) can be used at the rear inlet port of the stage housing to mount the unit variably in height (560 to 700 mm) as well as capable of rotating (180°).

The submersible unit is permitted for general use in areas subject to flooding without requiring additional outlay. The control unit has to be fitted in a well ventilated flood-proof room.

The construction with PE tank has freely accessible drains and a clamp-type inlet flange for easy installation. The top-mounted cleaning opening and the easy replaceability of the pre-mounted pumps also ensure time-saving servicing. Duplex systems have two pump units on one tank which are switched alternately or, if and when required, they are operated both in order to cope with peak load or reserve operation. This automatic switching sequence increase safety in particular for use in commercial or public buildings, and is always required in keeping with German / European standard DIN EN 12056-4, when the wastewater inflow must not be interrupted.



Performance



We reserve the right to change specifications without notice
Pump performance is subject to ISO 9906 tolerances
The minimum flow velocity in the pressure piping must be 0.7 m/s according to EN 12056.
This data is represented in the performance curve as a limit of application.

- Ready to connect
- Submersible
- Height-variable inlet
- Clamp-type inlet flange made of stainless steel
- Duplex swing-type check valve
- PE tank



Sewage disposal units

Type	Tank capacity l	Inlet height mm	Free passage mm	Clamp-type inlet flange	Connecting flange PN 10	for connecting pipe	Ventilation	Weight approx.	Code No.
compli 1210/4 BW	350	560	70	DN 150	DN 80	DN 100	DN 70	145.0 kg	JP 09168
compli 1215/4 BW	350	up to	70	DN 150	DN 80	DN 100	DN 70	145.0 kg	JP 09169
compli 1225/4 BW	350	700	70	DN 150	DN 80	DN 100	DN 70	145.0 kg	JP 09170
compli 1225/2 BW	350	variable	70	DN 150	DN 80	DN 100	DN 70	149.0 kg	JP 09171
compli 1235/2 BW	350		70	DN 150	DN 80	DN 100	DN 70	158.0 kg	JP 09172

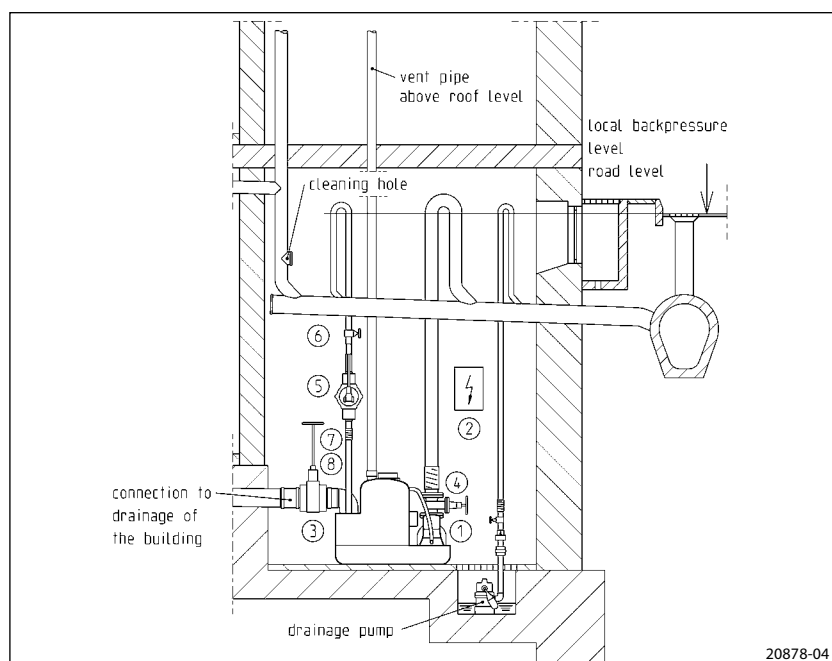
Performance

Type	Delivery head H [m]	1	2	3	4	5	6	7	8	9	10	11	13	15	17
compli 1210/4 BW	Flow rate Q [m³/h]	52	44	37	29	22	13								
compli 1215/4 BW		69	62	56	49	42	36	27	19						
compli 1225/4 BW						56	49	42	32	22	13				
compli 1225/2 BW		69	64	58	52	47	42	37	33	28	23	20	8		
compli 1235/2 BW		85	80	75	71	66	62	57	54	50	47	44	36	30	21

Electrical data

Type	Type of current	Voltage Volt	Motor rating kW		Current Ampere	RPM min. ⁻¹	Cable (4 m) Tank control	Cable (1.5 m) Control plug	Plug
compli 1210/4 BW	3-phase	3/N/PE~400	P ₁ 1.3	P ₂ 1.0	2.8	1451	H07RN-F-6 G 1.5	H05VV-F-5 G 1.5	CEE-
compli 1215/4 BW	3-phase	3/N/PE~400	2.2	1.7	3.9	1405	H07RN-F-6 G 1.5	H05VV-F-5 G 1.5	CEE-
compli 1225/4 BW	3-phase	3/N/PE~400	3.0	2.2	5.1	1363	H07RN-F-6 G 1.5	H05VV-F-5 G 1.5	CEE-
compli 1225/2 BW	3-phase	3/N/PE~400	3.3	2.6	5.4	2812	H07RN-F-6 G 1.5	H05VV-F-5 G 1.5	CEE-
compli 1235/2 BW	3-phase	3/N/PE~400	4.8	4.0	8.2	2886	H07RN-F-6 G 1.5	H05VV-F-5 G 1.5	CEE-

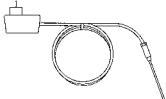

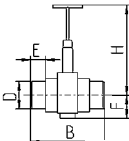
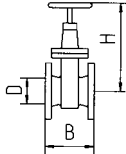
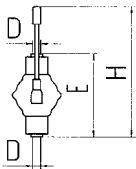
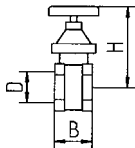
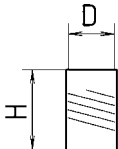

Mounting arrangement



All types have DN 80 / PN 10 connecting flange, however with pipe socket DN 100. For this reason, a non-return valve for the pressure pipe need to be chosen for DN 80 only in case of direct erection. The downstream pressure pipe is connected to DN 100 by an elastic connection.

In keeping with the construction and testing principles of German / European standard DIN EN 12050, sewage disposal units are to be used for the transport of faecal matter and domestic waste-water in building drainage systems as described in German standard DIN 1983 T3. In keeping with the stipulations of German / European standard DIN EN 12056-4 they have to be mounted with collecting tanks inside building permitting a free space of 60 cm for operation and repair. The pressure pipe has to be passed above the locally defined backpressure level and a non-return valve tested in keeping with German / European standard 12050-4 has to be mounted. In keeping with German / European standard 12056 the ventilation pipe has to be passed up to the roof.

Accessories

					Code No.			
	①	Seal leak detector DKG (for 25/2 BW and 35/2 BW) Please account one seal leak detector per pump			JP 00252			
	②	Rechargeable battery for control for mains-independent alarm			JP 07562			
	③	PVC sluice valve (with two pipe sockets) for 6" inlet (DN 150) PN 2.5	H 660	B 450	E 110	F 105	D 160	JP 28591
	④	Sluice valve* for 3" pressure side (DN 80), PN 10, DIN EN 1171	H 315	B 180	D DN 80 for 3" pressure side		JP 00639	
	⑥	Hand diaphragm pump for emergency purposes (up to H_{geod} 15 m)	H approx. 640	E 430	D 1½"		JP 00255	
	⑦	Stop valve, 1½" (DN 40), PN 16	H 125	B max. 60	D 1½"		JP 11837	
	⑧	Elastic connection 1½" (DN 40), PN 4	H 120	D 50		JP 20368		
	⑨	Clamp 1½"	JP 03571					

* with screws and seal

