

## Application

Without a great deal of construction work, underfloor sump Baufix 100 can be used to remove effluent from laundries, storage or cellar areas below the backpressure level. The use as a collecting tank for faeces is not permitted.

Without formwork, the pressure-resistant plastic container is placed into the concrete bed and forms a collecting tank for underfloor pipework. The installation in areas subject to the ground-water flooding is permitted only along with additional measures (water-tight concrete shell) as the connection between PE and concrete does not withstand pressing water. The pump to be placed can be selected according to the amount of wastewater. The dirty water to be transported and the pumping power required have to be taken into consideration in particular. In case of slightly dirty water (grain size max. 10 mm), pumps U 3 KS, U 5 KS as well as U 6 K ES+DS can be used. If the admixtures are larger or the volume of wastewater is bigger, the use of a pump of the US series is recommendable. Pumps US 73+103 Ex are used in hazardous areas. For the disposal of condensate from condensing boilers, the special variant U 3 KS spezial has to be used.

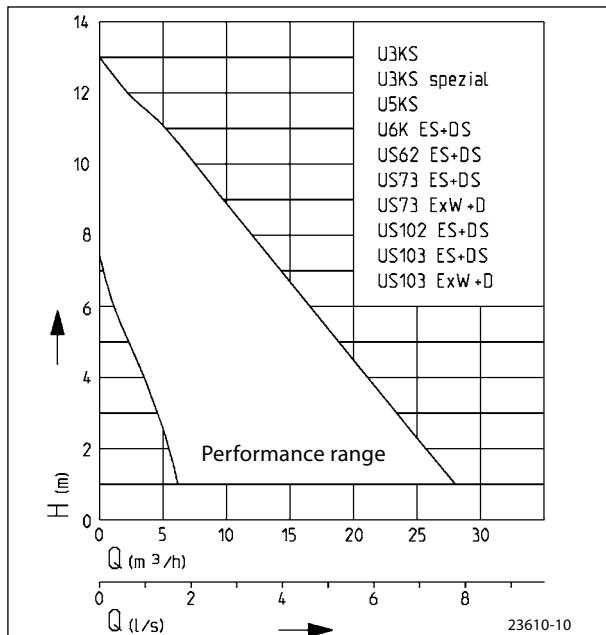
The swing type-check valve fitted in the works of the manufacturer prevents the reflux of the waste-water from the pressure pipe into the sump. The standard odour trap stops annoyance caused by offensive odour.

By subsequently adjusting the plastic cover frame, the sump cover can be adapted easily and variably to the floor and tile conditions.

The unit is in conformity with the specification of German / European standard DIN EN 12050.



## Performance



We reserve the right to change specifications without notice  
Pump performance is subject to ISO 9906 tolerances

- Odour trap
- Floor drain
- Complete pressure pipe in the tank
- Mounted swing-type check valve
- Level-compensating frame
- Extendable tank neck



## Underfloor sump

Type	Dimensions H x W x D	Weight	Code No.
Baufix 100 sump with cover and floor drain, without pump	600 x 530 x 530 mm	11.5 kg	JP 09706

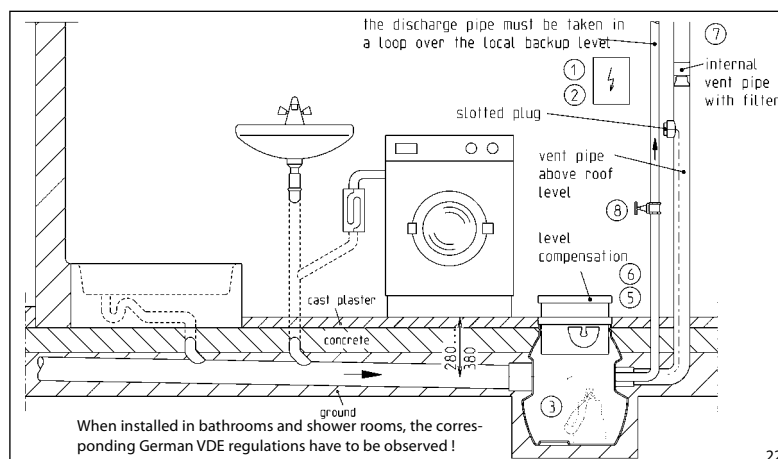
## Performance

Types	Delivery head H [m]	1	2	3	4	5	6	7	8	9	10	11	12
U 3 KS	Delivery rate Q [m³/h]	6.5	5.5	5	4	3	1.5						
U 3 KS special		6.5	5.5	5	4	3	1.5						
U 5 KS		11	10.5	9	7.5	6.5	4.5	2.5					
U 6 K ES/DS		1.5	14	12.5	11	9	7.5	5.5	3.5	1.5			
US 62 ES		19	17	15	12	10	8	6	4	2			
US 62 DS		22	20	17	15	12	10	8	6	4			
US 73 ES		19	17	15	12	10	8	6	4	2			
US 73 DS		22	20	17	15	12	10	8	6	4			
US 102 ES/DS		28	26	23	21	19	17	15	12	10	8	5	2
US 103 ES/DS		28	26	23	21	19	17	15	12	10	8	5	2
US 73 Ex W		19	17	15	12	10	8	6	4	2			
US 73 Ex D		22	20	17	15	12	10	8	6	4			
US 103 Ex W/D		28	26	23	21	19	17	15	12	10	8	5	2

## Electrical data

Baufix100 sump optionally with type	Type of current	Voltage Volt	Motor rating kW		RPM min <sup>-1</sup>	Current Ampere	Motor protection	Plug
U 3 KS	1-phase	1/N/PE~230	0.32	0.20	2720	1.4		Safety-
U 3 KS special	1-phase	1/N/PE~230	0.32	0.20	2720	1.4		Safety-
U 5 KS	1-phase	1/N/PE~230	0.52	0.38	2716	2.3		Safety-
U 6 K ES	1-phase	1/N/PE~230	0.75	0.49	2645	3.3		Safety-
U 6 K DS	3-phase	3/PE~400	0.75	0.55	2678	1.3		CEE-
US 62 ES	1-phase	1/N/PE~230	0.83	0.50	2500	3.9	installed in the winding	Safety-
US 62 DS	3-phase	3/PE~400	0.85	0.60	2800	1.4		CEE-
US 73 ES	1-phase	1/N/PE~230	0.83	0.50	2500	3.9		Safety-
US 73 DS	3-phase	3/PE~400	0.85	0.60	2800	1.4		CEE-
US 102 ES	1-phase	1/N/PE~230	1.37	0.98	2700	6.0		Safety-
US 102 DS	3-phase	3/PE~400	1.36	1.06	2740	2.4		CEE-
US 103 ES	1-phase	1/N/PE~230	1.37	0.98	2700	6.0		Safety-
US 103 DS	3-phase	3/PE~400	1.36	1.06	2740	2.4		CEE-
US 73 Ex W	1-phase	1/N/PE~230	0.83	0.50	2510	3.9	in the control + winding thermostat	without
US 73 Ex D	3-phase	3/PE~400	0.85	0.60	2800	1.4		without
US 103 Ex W	1-phase	1/N/PE~230	1.37	0.98	2700	6.0		without
US 103 Ex D	3-phase	3/PE~400	1.36	1.06	2740	2.4		without



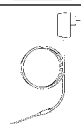
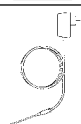

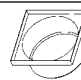

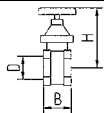
## Mounting arrangement Baufix 100



When used downstream of the backpressure level, German / European standard DIN EN 12056 requires the pressure pipe to be connected elastically and to be passed over the locally defined backpressure level in a loop. Moreover, the installation of a non-return valve is prescribed, which has been tested in keeping with German / European standard DIN EN 12050-4. In addition, we recommend an alarm system for monitoring.

22140-04

## Accessories

		Code No.
	① Alarm system with submersible ball contact switch, separate, mains-dependent, with potential-free contact and 3 m cable	JP 16723
	Alarm system ditto with 9.5 m cable	JP 24434
	Alarm system AW 3 with washing machine stop	JP 25090
	with submersible ball contact switch, separate, mains-dependent, and 3 m cable	JP 25091
	Alarm system AW 10 with washing machine stop ditto with 9.5 m cable	JP 25233
	Alarm system AWO with washing machine stop	JP 25901
	(plug housing - for alarm forwarding in case of several washing machines)	JP 25902
	Control unit AD 4 Ex W (only for US 73 Ex W)	JP 09754
	Control unit AD 8 Ex W (only for US 103 Ex W)	JP 09683
	Control unit AD 23 Ex (only for US 73 Ex D)	JP 01080
	Control unit AD 25 Ex (only for US 103 Ex D)	
	LM-circuit (for explosion-proof pumps only)	
	② Rechargeable battery for mains-independent alarm	JP 07562
	③ Seal leak detector	DKG (for US pumps only)
		DKG Ex (only for US 73 Ex + US 103 Ex)
		JP 00252
		JP 00249
	④ Assembly set for LM circuit when a US 73 Ex + US 103 Ex is installed	JP 22410
	⑤ Cover plate, to be tiled with stainless steel floor drain and odour trap	JP 24024
	⑥ Cover frame stainless steel	JP 28118
	⑦ Special ventilation, special filter with housing	JP 27484
	⑧ Stop valve, 1 1/4" (DN 32), PN 16	<div style="display: flex; align-items: center;"> <div style="margin-right: 10px;"> <math>\frac{H}{110}</math> <math>\frac{B}{max. 60}</math> <math>\frac{D}{1\frac{1}{4}''}</math> </div> <div>JP 11836</div> </div>

## Mounting instructions

### Floor level compensation

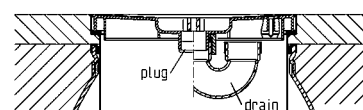
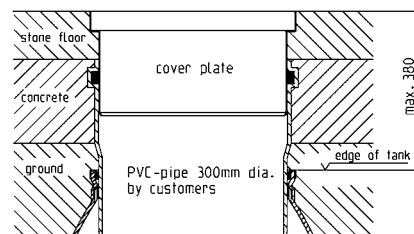
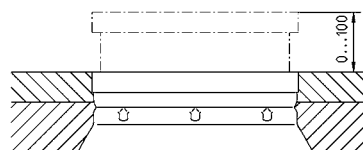
The cover with the round throat shoulder in the sump opening can be aligned vertically and rotationally. Thus, Baufix can be adapted to the effective upper edge of floor coverings or tiles laid at a later point. A profile sealing ring is used to seal the space between sump and cover.

### Extended floor level compensation (provided by customer)

If and when required, a commercially available DN 300 pipe can be used by the customer to increase the installation depth from approx. 280 mm to 380 mm. The PVC pipe is inserted into the tank instead of the cover frame. The frame is then pushed into the socket of the PVC pipe.

### Odour trap

An odour trap is provided as a standard for the floor drain. The necessary siphon components belong to the scope of supply.



22314-03

### Technical data

#### Tank

Water-tight PE tank (70 l) with two combined inlets (DN 100), connecting piece for ventilation / cable conduit (DN 70) and connecting piece for pressure pipe DN 32 (PVC pipe, diam. 40 mm), level-compensating plastic frame, odour-tight plastic cover (screw fitted) and odour-tight floor drain.

All junctions (tank / plastic cover frame and plastic cover frame / cover plate) are fitted with profiled seals.

#### Installation

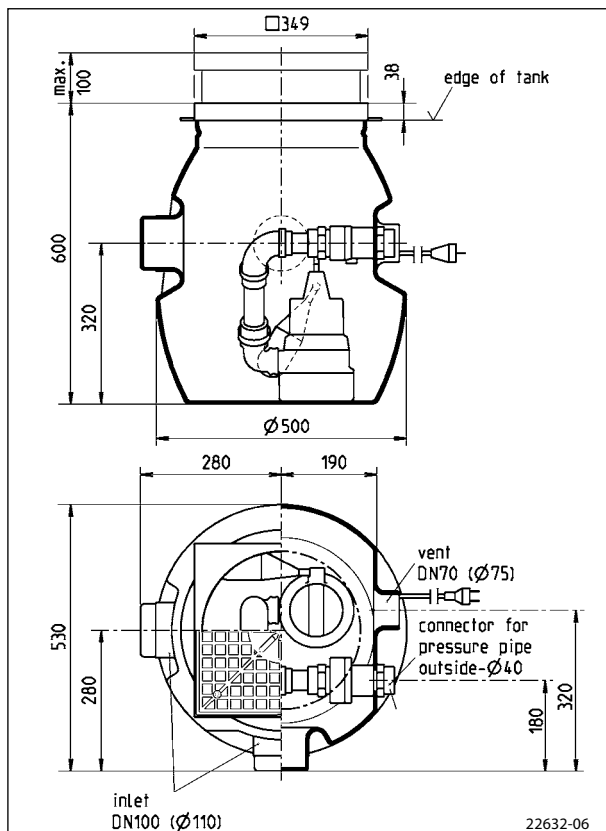
Place the tank in the prepared pit and align. Make the pipe connections, and encase the sump with concrete flush with the upper edge. Insulation, screed and flooring material are levelled by the height-adjustable plastic cover frame. Screw the pipe connection supplied into the pressure line connection of the pump (shorten pipe length as specified). Connect the pump to the elastic casing fitting in the tank. Pass the power cable of the pump through the venting line up to the T piece (to be provided by the customer according to the installation drawing). The outlet is then sealed odour-tight with the closing plug provided. If ventilation is not possible via the roof, the special ventilation system (see accessories / installation drawing) can be used.

**Caution ! It is not necessary to cut off the plug of the pump !**

#### Scope of supply

Plastic tank to house a pump tested in keeping with German / European standard DIN EN 12050 with shaped connecting piece and level-compensating plastic cover frame with cover plate, odour trap for floor drain, hose connection, premounted discharge branch with swing-type check valve, parts required for pump installation, plug for cable conduit, without pump.

### Dimensions Baufix 100 (mm)



### Alarm device

